

Historic, archived document

Do not assume content reflects current scientific knowledge, policies, or practices.

Score

GREATER SUCCESS

Through these opportunities for profit!

Look ahead to the time when you'll need saleable stock of the varieties shown here. "Get set" for orders you are bound to receive. Scan this folder now and keep thinking, "The man who wins is the man who acts promptly." Act!

Offers for
the Trade Only

THE CONARD-PYLE CO.
Robert Pyle, President WEST GROVE, PA.
Nurserymen Since 1897

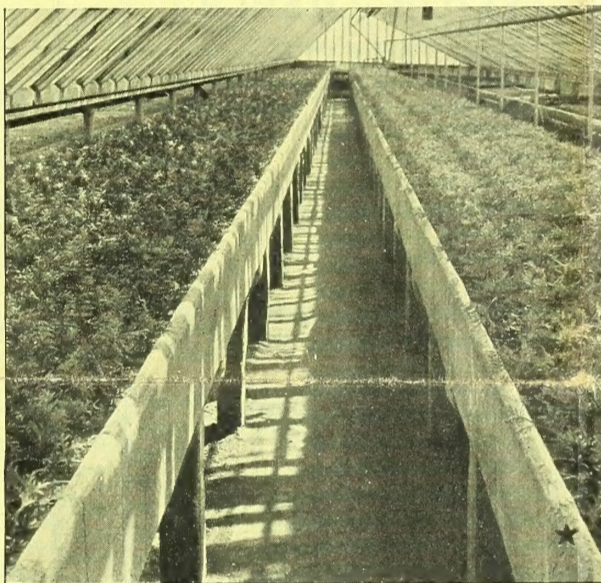
Offers for
the Trade Only

LINING-OUT EVERGREENS

The much-heard-of 2¼ in. pot-grown plants

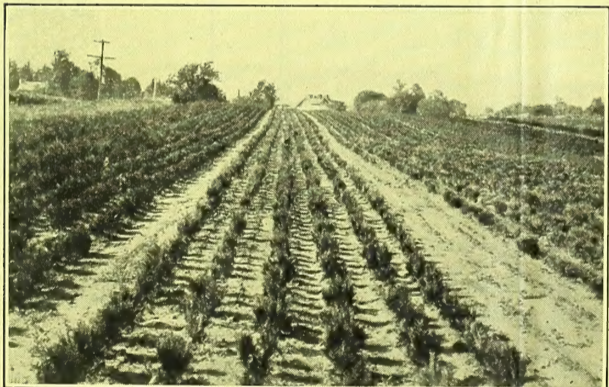
200 of a kind at 1000 Rate

	100	1,000
BUXUS semp. suffruticosa (Truedwarf Box)	\$7.00	\$60.00
CHAMAECYPARIS laws. alumi (Scarab C.)	12.00	100.00
JUNIPERUS chinensis (Chinese Juniper)	15.00	
ch. pfitzeriana (Pfitzer Juniper)	14.00	120.00
comm. hibernica (Irish Juniper)	12.00	100.00
depressa plumosa (Plumed Spreading J.)	20.00	
RETINOSPORA filifera (Thread Retinospora)	9.00	75.00
obtusa compacta (Football Cypress)	14.00	120.00
obtusa gracilis (Slender Hinoki Cypress)	14.00	120.00
pisifera (Sawara Retinospora)	9.00	75.00
pisifera aurea (Golden Sawara Retinospora)	9.00	75.00
plumosa (Plume Retinospora)	10.00	90.00
plumosa aurea (Golden Plume Retinospora)	10.00	90.00
plumosa lutescens (Dwf. Yel. Pl. Cyp.)	10.00	90.00
squarrosa veitchi (Veitch Moss Cypress)	10.00	90.00
TAXUS cuspidata (Spreading Japanese Yew)	18.00	150.00
cuspidata nana (Dwarf Japanese Yew)	25.00	
media hicksi (Hicks Yew) See cut	25.00	200.00
THUJA occ. compacta (Parsons Arborvitae)	10.00	90.00
occ. elegantissima (Golden-tipped Arb.)	10.00	90.00
occ. globosa (American Globe Arborvitae)	10.00	90.00
occ. lutea (George Peabody Arborvitae)	10.00	90.00
occ. pumila (Green Globe Arborvitae)	10.00	90.00
occ. pyramidalis (American Pyr. Arborvitae)	8.00	75.00
occ. vervaeneana (Vervaena Arborvitae)	8.00	75.00
occ. wareana (Siberian Arborvitae)	8.00	75.00



THEY ESTABLISH RECORD FOR ROOTING!

Neatly grown and nicely rooted—two factors which assure you solid satisfaction and unbroken rows.



RESULTS COUNT!!! Pot grown stock, second season field.
THUJA occ. elegantissima in foreground.

"CHILDREN of a LARGER GROWTH"

Pot stock grown one year in field

	100	
JUNIPERUS comm. hibernica, 10 to 12 in., B. & B.	\$35.00	
virg. glauca, 10 to 12 in., B. & B.	50.00	
virg. keteleeri, 10 to 12 in., B. & B.	50.00	
virg. smithi, 8 to 10 in., B. & B.	50.00	
RETINOSPORA filifera, 8 to 10 in., not B. & B.	15.00	
filifera aurea, 6 to 8 in., B. & B.	25.00	
obtusa, 8 to 10 in., B. & B.	35.00	
obtusa compacta, 10 to 12 in., B. & B.	75.00	
obtusa crippei, 10 to 12 in., B. & B.	100.00	
obtusa gracilis, 8 to 10 in., B. & B.	35.00	
pisifera, 10 to 12 in., B. & B.	25.00	
pisifera aurea, 10 to 12 in., B. & B.	25.00	
plumosa aurea, 9 to 12 in., B. & B.	25.00	
plumosa lutescens, 6 to 8 in., B. & B.	25.00	
squarrosa veitchi, 10 to 12 in., B. & B.	25.00	
THUJA occ. compacta, 8 to 10 in., B. & B.	25.00	
occ. elegantissima, 8 to 10 in., B. & B.	25.00	
occ. globosa, 6 to 8 in., B. & B.	25.00	
occ. lutea, 4 to 6 in., B. & B.	25.00	
occ. pumila, 6 to 8 in., B. & B.	25.00	
occ. pyramidalis, 10 to 12 in., B. & B.	25.00	
occ. vervaeneana, 8 to 10 in., B. & B.	25.00	
occ. wareana, 8 to 10 in., B. & B.	25.00	



You'll root
for
their roots!

Tucked snugly into beds of Jersey sand on benches of concrete and slate, these husky little Evergreens began their careers last Fall and from then until late Spring established an endurance record for rooting.

"Re-fueled" in early Summer with fresh, fertilized soil and placed in 2¼-in. pots, they were off again to new glory, but in September, charged with energy, they "came down" to the frames for the Winter rest-period. Here they are to remain until Spring — all of their growing-power sealed for you.

That is the story of these widely-known result-producers. First, reliably rooted; then, reasonably rested. Only from such stock can you secure rows without a miss and positive satisfaction.

Make "hay"—order today

Picture
QUICK TURNOVER
with this
RAPID GROWER

THUJA OCC. ELEGANTISSIMA
(Golden-Tipped Arborvitae)

	Lots
	250 and up
8 to 10 in., B. & B.	20c
12 to 15 in., B. & B.	30c

See opportunities inside—real news to money-makers!



JUNIPERUS pfitzeriana
12 to 15 in., B. & B., 50c

For growing on, for small plantings and for sample displays

EVERY EVERGREEN AN OP

... To...
PROVIDE FOR SALES IN T...
... Or To...
MAKE AN IMMEDI

**POPULAR
FOR AMATEUR
PLANTINGS**

- JUNIPERUS pfitzeriana
15 to 18 in., B. & B. 75c
- RETINOSPORA pisifera
1½ to 2 ft., B. & B. 50c
- RETINOSPORA pisifera aurea
1 to 1½ ft., B. & B. 35c
- RETINOSPORA plumosa
1½ to 2 ft., B. & B. 75c
- RETINOSPORA plumosa aurea
1½ to 2 ft., B. & B. 75c
- THUJA occ. globosa
9 to 12 in., B. & B. 35c
- THUJA occ. pyramidalis
2 to 2½ in., B. & B. \$1.00

**SAMPLES
for
YOUR DISPLAY
PLOTS**

- RETINOSPORA pisifera
2 to 2½ ft., B. & B. 75c
- RETINOSPORA pisifera aurea
2 to 2½ ft., B. & B. 75c
- RETINOSPORA plumosa
2 to 2½ ft., B. & B. \$1.00
- RETINOSPORA lutescens
10 to 12 in., B. & B. 50c
- RETINOSPORA sq. veitchi
15 to 18 in., B. & B. 75c
- THUJA occ. pumila
15 to 18 in., B. & B. \$1.00
- THUJA pyramidalis
2½ to 3 ft., B. & B. \$1.50

**FOR
MARKET-DAY**

- BUXUS sempervirens
10 to 12 in. 35c
- JUNIPERUS ch. albovariegata
1½ to 2 ft., B. & B. \$1.50
- JUNIPERUS pfitzeriana
12 to 15 in., B. & B. 50c
- RETINOSPORA filifera
15 to 18 in., B. & B. 35c
- RETINOSPORA pisifera
1½ to 2 ft., B. & B. 50c
- RETINOSPORA pisifera aurea
1½ to 2 ft., B. & B. 50c
- RETINOSPORA plumosa
1½ to 2 ft., B. & B. 75c
- RETINOSPORA plumosa aurea
1½ to 2 ft., B. & B. 75c
- RETINOSPORA lutescens
10 to 12 in., B. & B. 50c
- RETINOSPORA sq. veitchi
15 to 18 in., B. & B. 75c
- THUJA occ. compacta
10 to 12 in., B. & B. 50c
(Extra Bushy)
- THUJA occ. pumila
15 to 18 in., B. & B. \$1.00
- THUJA occ. pyramidalis
1½ to 2 ft., B. & B. 75c
- THUJA occ. vervaeneana
2 to 2½ ft., B. & B. \$1.00
- THUJA occ. wareana
15 to 18 in., B. & B. 60c

USEFU

as well as
ORNAMEN

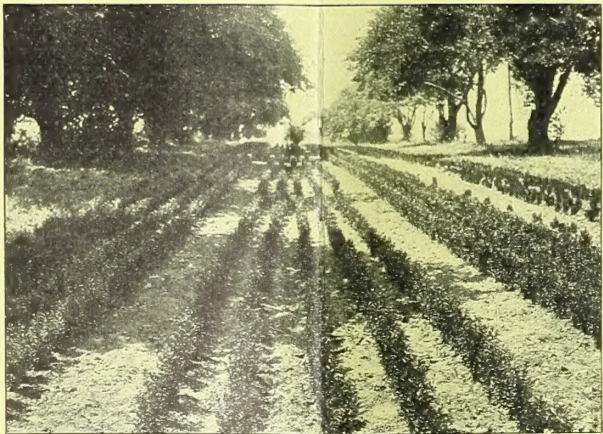


THUJA ("Biota") C...
(Yellow Colum...

- 1½ to 2 ft., B. & B.
- 2 to 2½ ft., B. & B.
- 2½ to 3 ft., B. & B.

ALL SPLENDID SPECIMEN FOR
LIGHT LANDSCAPING

24 Pages, 21 Illustrations
USEFUL WHOLES
Your Letterhead Writing



BUXUS sempervirens
10 to 12 in. 100 250 up
50c 35c

These Evergreens are grown in
THE CONAR...
WEST GE...

OPPORTUNITY FOR YOU

To . . .

IN THE YEARS AHEAD

To . . .

IMMEDIATE PROFIT

FUL

ell as

MENTAL



orientalis Elegantissima
(*Common Arborvitae*)

.....\$1.00

.....\$1.50

.....\$2.00

ENS FOR ROADSIDE SALES,
ING OR FILLING URNS

ons, Valuable Descriptions

SALE TRADE-LIST

Will Bring You a Copy

a clay-base loam, best for balling

RD-PYLE CO.

GROVE, PA.

OF INTEREST to ROAD STAND OWNERS

RETINOSPORA *plumosa*
2 to 2½ ft., B. & B.\$1.00

RETINOSPORA *lutescens*
10 to 12 in., B. & B. 50c

RETINOSPORA *sq. veitchi*
15 to 18 in., B. & B. 75c

THUJA *occ. pyramidalis*
2 to 2½ ft., B. & B.\$1.25

THUJA *occ. vervaeneana*
2 to 2½ ft., B. & B.\$1.00

THUJA *wareana*
15 to 18 in., B. & B. 60c

THUJA *orientalis (Biota)*
2½ to 3 ft., B. & B.\$1.50

THUJA *orientalis aurea nana*
(*Biota*)
15 to 18 in., B. & B.\$1.25
18 to 21 in., B. & B.\$1.75

THUJA *orientalis elegantissima*
(*Biota*)
2 to 2½ ft., B. & B.\$1.50
2½ to 3 ft., B. & B.\$2.00

TSUGA *canadensis*
1½ to 2 ft., B. & B.\$1.00
2 to 2½ ft., B. & B.\$1.50



THUJA ("Biota") *orientalis aurea nana*
12 to 15 in., B. & B., \$1.00

Sell for Window Boxes and Urns; Also for Cash and Carry Trade

A LIMITED LIST for GENERAL USE

Your Choice 50c

JUNIPERUS *ch. pfitzeriana*
12 to 15 in., B. & B.

RETINOSPORA *pisifera*
1½ to 2 ft., B. & B.

RETINOSPORA *pisifera aurea*
1½ to 2 ft., B. & B.

THUJA *occ. elegantissima*
15 to 18 in., B. & B.

THUJA *occ. pyramidalis*
1 to 1½ ft., B. & B.

THUJA *occ. vervaeneana*
15 to 18 in., B. & B.

HEDGE PLANT

Par Excellence!

TSUGA canadensis

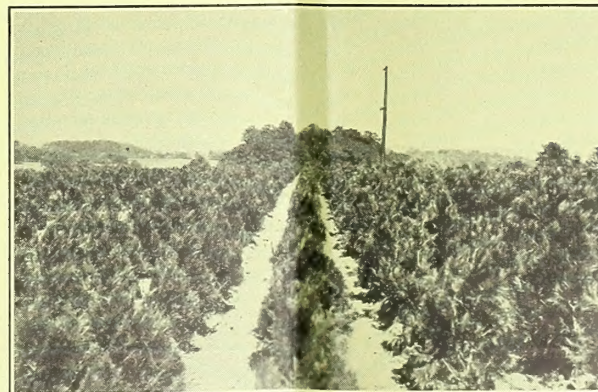
(*Canada Hemlock*)

15 to 18 in., B. & B. 75c

1½ to 2 ft., B. & B.\$1.00

2 to 2½ ft., B. & B.\$1.50

SET THE PLANTS SO
THAT THEY TOUCH
AT PLANTING TIME



Retinospora pisifera aurea

1 to 1½ ft., B. & B., 35c

1½ to 2 ft., B. & B., 50c

EVERY EVERGREEN AN OPPORTUNITY FOR YOU

... To ...

PROVIDE FOR SALES IN THE YEARS AHEAD

... Or To ...

MAKE AN IMMEDIATE PROFIT



JUNIPERUS pfitzeriana
12 to 15 in., B. & B., 50c

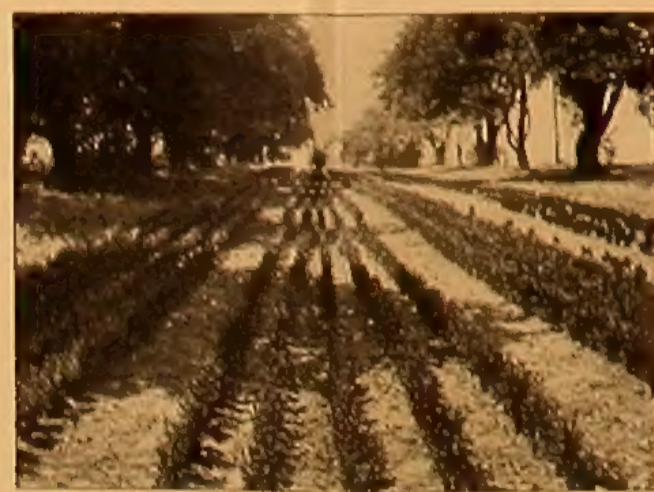
For growing on, for small plantings and for sample displays

POPULAR FOR AMATEUR PLANTINGS

- JUNIPERUS pfitzeriana
15 to 18 in., B. & B. 75c
- RETINOSPORA pisifera
1½ to 2 ft., B. & B. 50c
- RETINOSPORA pisifera aurea
1 to 1½ ft., B. & B. 35c
- RETINOSPORA plumosa
1½ to 2 ft., B. & B. 75c
- RETINOSPORA plumosa aurea
1½ to 2 ft., B. & B. 75c
- THUJA occ. globosa
9 to 12 in., B. & B. 35c
- THUJA occ. pyramidalis
2 to 2½ in., B. & B. \$1.00

SAMPLES for YOUR DISPLAY PLOTS

- RETINOSPORA pisifera
2 to 2½ ft., B. & B. 75c
- RETINOSPORA pisifera aurea
2 to 2½ ft., B. & B. 75c
- RETINOSPORA plumosa
2 to 2½ ft., B. & B. \$1.00
- RETINOSPORA lutescens
10 to 12 in., B. & B. 50c
- RETINOSPORA sq. veitchi
15 to 18 in., B. & B. 75c
- THUJA occ. pumila
15 to 18 in., B. & B. \$1.00
- THUJA pyramidalis
2½ to 3 ft., B. & B. \$1.50



BUXUS sempervirens
100 250 up
10 to 12 in., 50c 35c

FOR MARKET-DAY

- BUXUS sempervirens
10 to 12 in. 35c
- JUNIPERUS ch. albovariegata
1½ to 2 ft., B. & B. \$1.50
- JUNIPERUS pfitzeriana
12 to 15 in., B. & B. 50c
- RETINOSPORA filifera
15 to 18 in., B. & B. 35c
- RETINOSPORA pisifera
1½ to 2 ft., B. & B. 50c
- RETINOSPORA pisifera aurea
1½ to 2 ft., B. & B. 50c
- RETINOSPORA plumosa
1½ to 2 ft., B. & B. 75c
- RETINOSPORA plumosa aurea
1½ to 2 ft., B. & B. 75c
- RETINOSPORA lutescens
10 to 12 in., B. & B. 50c
- RETINOSPORA sq. veitchi
15 to 18 in., B. & B. 75c
- THUJA occ. compacta
10 to 12 in., B. & B. 50c
(Extra Bushy)
- THUJA occ. pumila
15 to 18 in., B. & B. \$1.00
- THUJA occ. pyramidalis
1½ to 2 ft., B. & B. 75c
- THUJA occ. vervaeneana
2 to 2½ ft., B. & B. \$1.00
- THUJA occ. wareana
15 to 18 in., B. & B. 60c

USEFUL as well as ORNAMENTAL



THUJA ("Biota") Orientalis Elegantissima
(Yellow Column Arborvitae)

- 1½ to 2 ft., B. & B. \$1.00
- 2 to 2½ ft., B. & B. \$1.50
- 2½ to 3 ft., B. & B. \$2.00

ALL SPLENDID SPECIMENS FOR ROADSIDE SALES,
LIGHT LANDSCAPING OR FILLING URNS

24 Pages, 21 Illustrations, Valuable Descriptions
USEFUL WHOLESALE TRADE-LIST
Your Letterhead Will Bring You a Copy

OF INTEREST to ROAD STAND OWNERS

- RETINOSPORA plumosa
2 to 2½ ft., B. & B. \$1.00
- RETINOSPORA lutescens
10 to 12 in., B. & B. 50c
- RETINOSPORA sq. veitchi
15 to 18 in., B. & B. 75c
- THUJA occ. pyramidalis
2 to 2½ ft., B. & B. \$1.25
- THUJA occ. vervaeneana
2 to 2½ ft., B. & B. \$1.00
- THUJA wareana
15 to 18 in., B. & B. 60c
- THUJA orientalis (Biota)
2½ to 3 ft., B. & B. \$1.50
- THUJA orientalis aurea nana
(Biota)
15 to 18 in., B. & B. \$1.25
18 to 21 in., B. & B. \$1.75
- THUJA orientalis elegantissima
(Biota)
2 to 2½ ft., B. & B. \$1.50
2½ to 3 ft., B. & B. \$2.00
- TSUGA canadensis
1½ to 2 ft., B. & B. \$1.00
2 to 2½ ft., B. & B. \$1.50



THUJA ("Biota") orientalis aurea nana
12 to 15 in., B. & B., \$1.00

Sell for Window Boxes and Urns; Also for Cash and Carry Trade

A LIMITED LIST for GENERAL USE

Your Choice 50c

- JUNIPERUS ch. pfitzeriana
12 to 15 in., B. & B.
- RETINOSPORA pisifera
1½ to 2 ft., B. & B.
- RETINOSPORA pisifera aurea
1½ to 2 ft., B. & B.
- THUJA occ. elegantissima
15 to 18 in., B. & B.
- THUJA occ. pyramidalis
1 to 1½ ft., B. & B.
- THUJA occ. vervaeneana
15 to 18 in., B. & B.

HEDGE PLANT *Par Excellence!*

TSUGA canadensis (Canada Hemlock)

- 15 to 18 in., B. & B. 75c
- 1½ to 2 ft., B. & B. \$1.00
- 2 to 2½ ft., B. & B. \$1.50

SET THE PLANTS SO
THAT THEY TOUCH
AT PLANTING TIME



Retinospora pisifera aurea
1 to 1½ ft., B. & B., 35c
1½ to 2 ft., B. & B., 50c

These Evergreens are grown in a clay-base loam, best for balling
THE CONARD-PYLE CO.
WEST GROVE, PA.

AMONG THE RARER JUNIPERS

JUNIPERUS depressa plumosa
2¼-in. pots 20c

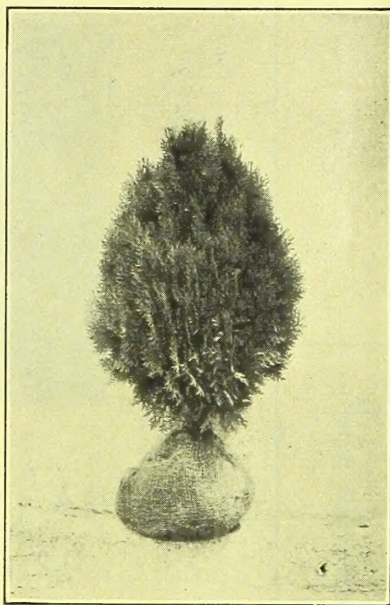
JUNIPERUS virg. burki
2¼-in. pots 25c
1 to 1½ ft., B. & B. \$1.50

TO GET ACQUAINTED WITH THESE

See descriptions in trade list or better still order a few samples to plant where you can study them conveniently.

JUNIPERUS virg. keteleeri
2¼-inch pots 25c
10 to 12 in., B. & B. 50c
1½ to 2 ft., B. & B. \$1.50

JUNIPERUS virg. smithi
2¼-in. pots 25c
8 to 10 in., B. & B. 50c
1 to 1½ ft., B. & B. \$1.50



Berckman's Golden

SELLS
WITHOUT YOUR EFFORT
when well-displayed
in urns or tubs

THUJA ("Biota") ORIENT. AUREA NANA
(Berckman's Golden)

10 to 12 in., B. & B.	75c
12 to 15 in., B. & B.	\$1.00
15 to 18 in., B. & B.	\$1.25
18 to 21 in., B. & B.	\$1.75

To enrich ROCKERIES Suggest these

RETINOSPORA obtusa compacta
10 to 12 in., B. & B. 75c

TAXUS cuspidata nana (brevifolia)
2¼-in. pots (to grow on) ... 25c

THUJA occ. compacta (Parsons Arborvitae)
10 to 12 in., B. & B. 35c
10 to 12 in., B. & B. 50c (Extra Bushy)

THUJA occ. globosa
9 to 12 in., B. & B. 35c

THUJA orient. aurea nana (Berckman's)
10 to 12 in., B. & B. 75c
12 to 15 in., B. & B. \$1.00
15 to 18 in., B. & B. \$1.25

EVERGREENS FOR WINDOW-BOXES

Offer



THUJA occ. pyramidalis

BUXUS sempervirens. Common Box	100	1,000
10 to 12 in.	\$50.00	\$350.00
1½ to 2 ft., B. & B.	150.00	
JUNIPERUS comm. hibernica. Irish Juniper		
10 to 12 in., B. & B.	35.00	
1½ to 2 ft., B. & B.	100.00	
RETINOSPORA plumosa. Plume Retinospora		
1 to 1½ ft., B. & B.	50.00	
RETINOSPORA plumosa aurea. Golden Plume Ret.		
12 to 15 in., B. & B.	35.00	
15 to 18 in., B. & B.	50.00	
THUJA occ. pyramidalis. Amer. Pyr. Arb.		
1 to 1½ ft., B. & B.	50.00	
THUJA (biota) orient. aurea nana. Berckman's		
12 to 15 in., B. & B.	100.00	
15 to 18 in., B. & B.	125.00	
TSUGA canadensis. Canada Hemlock		
15 to 18 in., B. & B.	75.00	

EXTRA PROFIT EASILY

through

Evergreens for Window-Boxes and Urns

Folks ready to replace Geraniums

Summer's flowers have flown. Your folks feel the need for sturdier stock. Theirs the boxes. Yours the plants and the profit!

Evergreens brighten dreary days ahead

You suggest Evergreens. Like winter sunshine will they enrich and beautify spots otherwise drab and unsightly. Friends gained!

Stock can be set to lawn in Spring

Press the point that Evergreens can be transplanted to lawn or garden when April comes. Thus will they provide all-year service. Follows a reliable list—what choose ye?

MAIL YOUR ORDER

... to ...

Offers
for the trade only
and subject to
prior sale

The CONARD-PYLE Co.
WEST GROVE, PA.
Robert Pyle, President
Nurserymen Since 1897

Prices F. O. B.
West Grove, Pa.
Packing free for cash
with order

